

heritage

red  
'colorband'

skylight  
wid

## INSPIRATION & IDEAS

NO. 690 LOTS 5 & 6 KINGSWAY, MIRANDA

DP 11987

Ground floor  
skylights

heritage  
red  
'colorband'

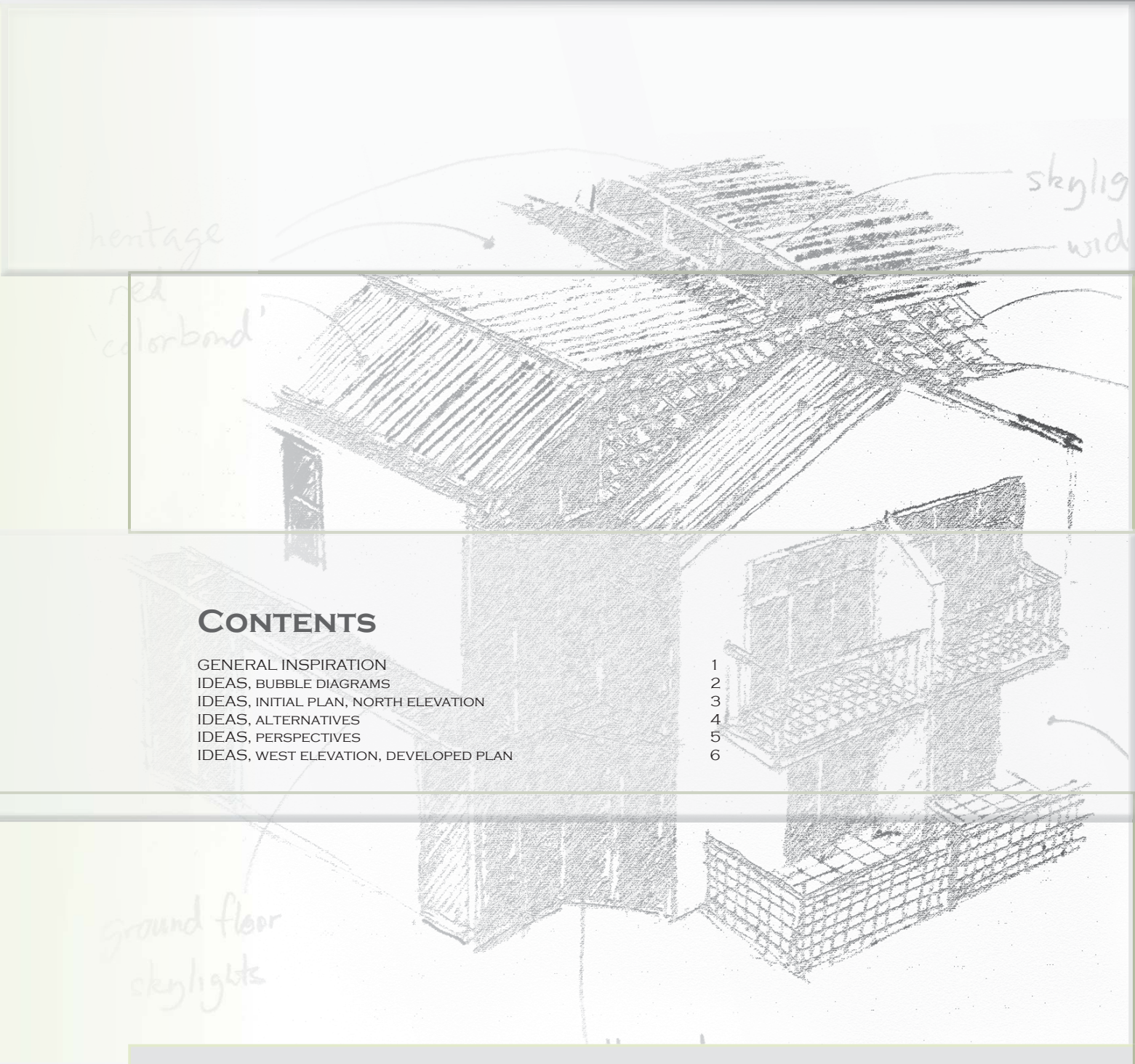
skylight  
wid

## CONTENTS

- GENERAL INSPIRATION
- IDEAS, BUBBLE DIAGRAMS
- IDEAS, INITIAL PLAN, NORTH ELEVATION
- IDEAS, ALTERNATIVES
- IDEAS, PERSPECTIVES
- IDEAS, WEST ELEVATION, DEVELOPED PLAN

- 1
- 2
- 3
- 4
- 5
- 6

ground floor  
skylights



## GENERAL INSPIRATION

Archohm Studio, Noida India  
 Completion Date: 2010  
 Design Team: Anindya Ghosh, Girdhar Singh Rautella, Shivdutt Sharma

**Inspiration** — the mixing of sympathetic materials in harmony that also creates robust contrasts in tone and texture  
**Likes** — stone, timber, glass and metal appealing with contrasting shapes  
**Dislikes** — the designers' apparent freedom of budget constraints  
**Note** — this is a design company's global headquarters. An indulgence of ideas, many more than shown, all present as one team.



Giacomuzzi limited partnership, Kalltern (BZ)  
 Realization: 2009/10  
 Architecture: monovolume architecture + design

**Inspiration** — a successful symbolic statement. Elegance and fun. A pleasing eye wink or smile. The impressive balance of mass above ground, on glass.  
**Likes** — sleek strong lines embracing transparent glass. Balancing a top-heavy mass in a pleasing way.  
**Dislikes** — the lack of available screening for the glass curtain walls for privacy and sunlight control  
**Materials** — reinforced concrete slabs with metal-framed window walls and doors



The Albert Barnes collection is moving from Pennsylvania to a new building created by Tod Williams and Billie Tsien in Philadelphia.

The winning project of a counselling centre by the Danish architects of EFFEKT atelier is designed as a group of seven smaller houses, arranged around two inner atria.

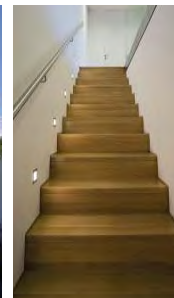
**Inspiration** — the feeling of space. The security of the frail flora and fauna contained within. An enclosed courtyard both outdoor and indoor.  
**Likes** — the subtlety of the beauty, thickness of the walls, table, roof and the reassurance coming from this  
**Dislikes** — that the beauty has been achieved through what seems to be paintings  
**Materials** — reinforced concrete forms or stud walls boxed into solid thick forms, clad with timber. Outside timber above stone, inside seemingly stone above timber.



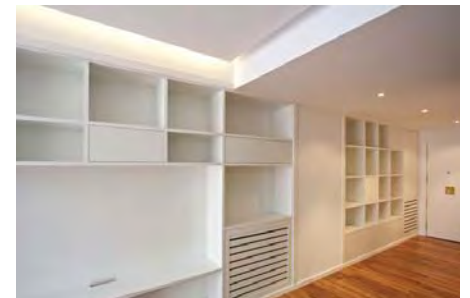
**Inspiration** — scale of success. That an entire glass tower the size of a skyscraper can lie on its side, fallen and not disturb the surrounding structures. Translucent glass spreading light like the Travertine finish of its companion form. That something can be massive and slender without height.  
**Likes** — the strangeness of one window in a glasshouse  
**Dislikes** — a lot of open space is required to balance this building on this site. It could sit just as well in a row of cramped tenement houses.  
**Notes** — this building has been purpose-built to contain what some people feel to be the stolen art collection of the Barnes Foundation.

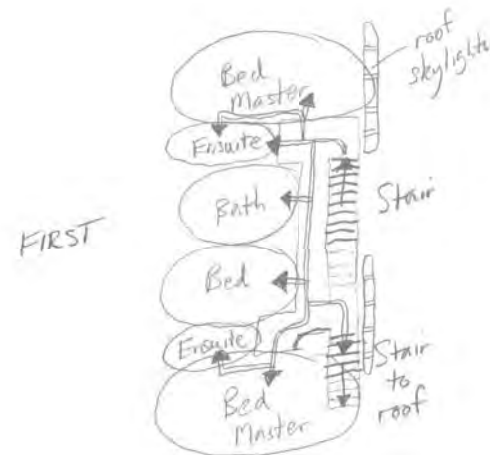
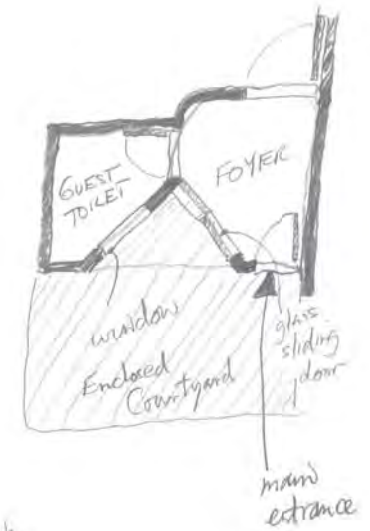
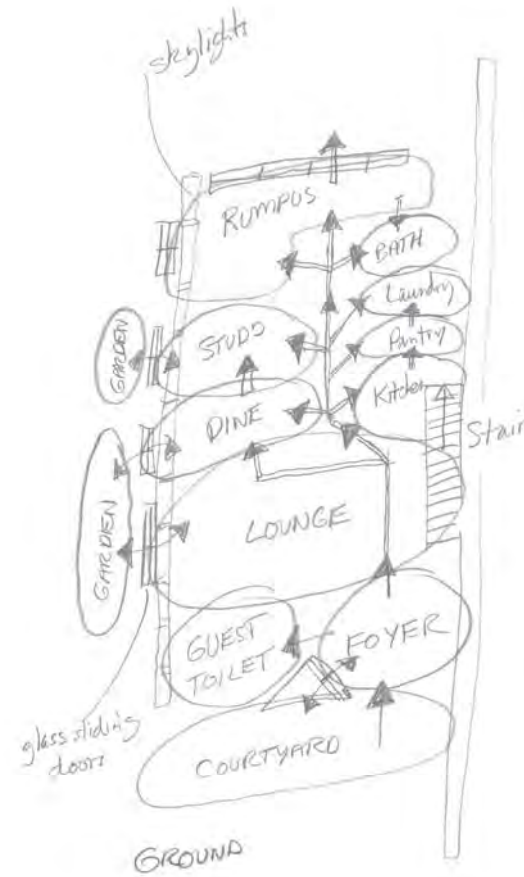
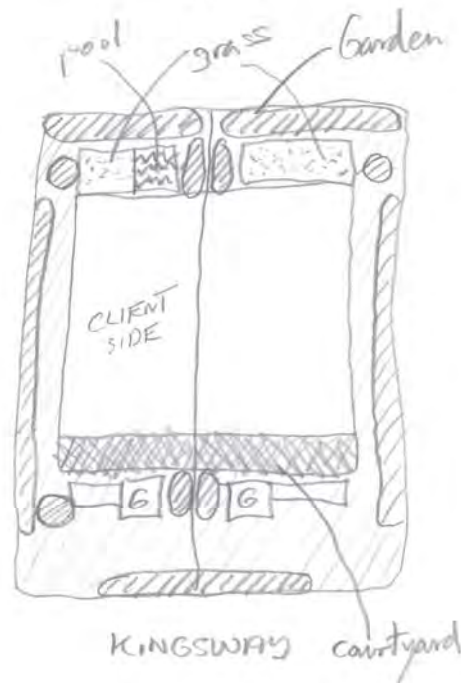
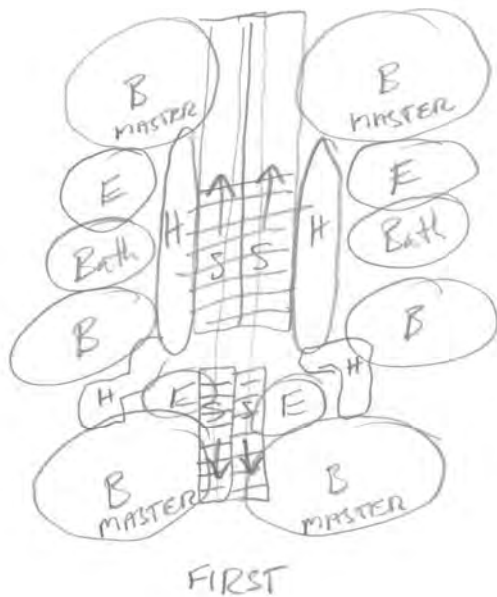
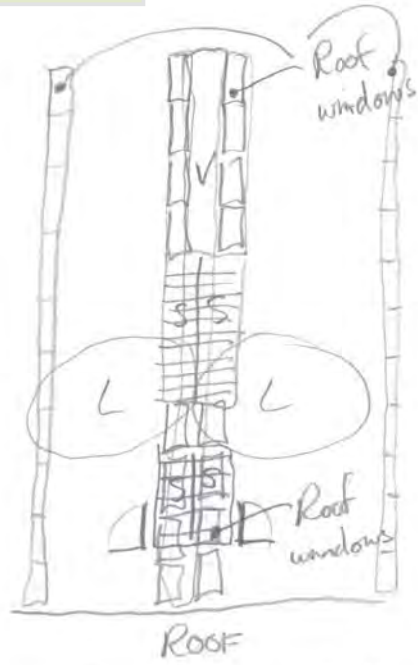
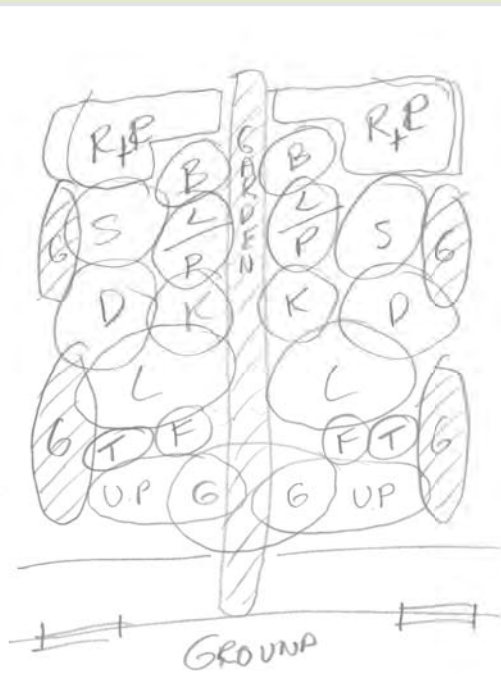
Designed on a building site with 600m<sup>2</sup> in Bratislava, Slovakia.

**Inspirations** — the powerful solid horizontal forms that are parallel, containing the top-half of the building, sitting in the sky, balanced and still part of the building. Beautiful simple forms such as the stairs  
**Likes** — the embrace of perspective. That a modern house with the aid of a single mass of horizontal detail and a touch of awning, can produce a home suitable for family life  
**Dislikes** — none  
**Materials** — concrete slabs with double brick or brick veneer walls

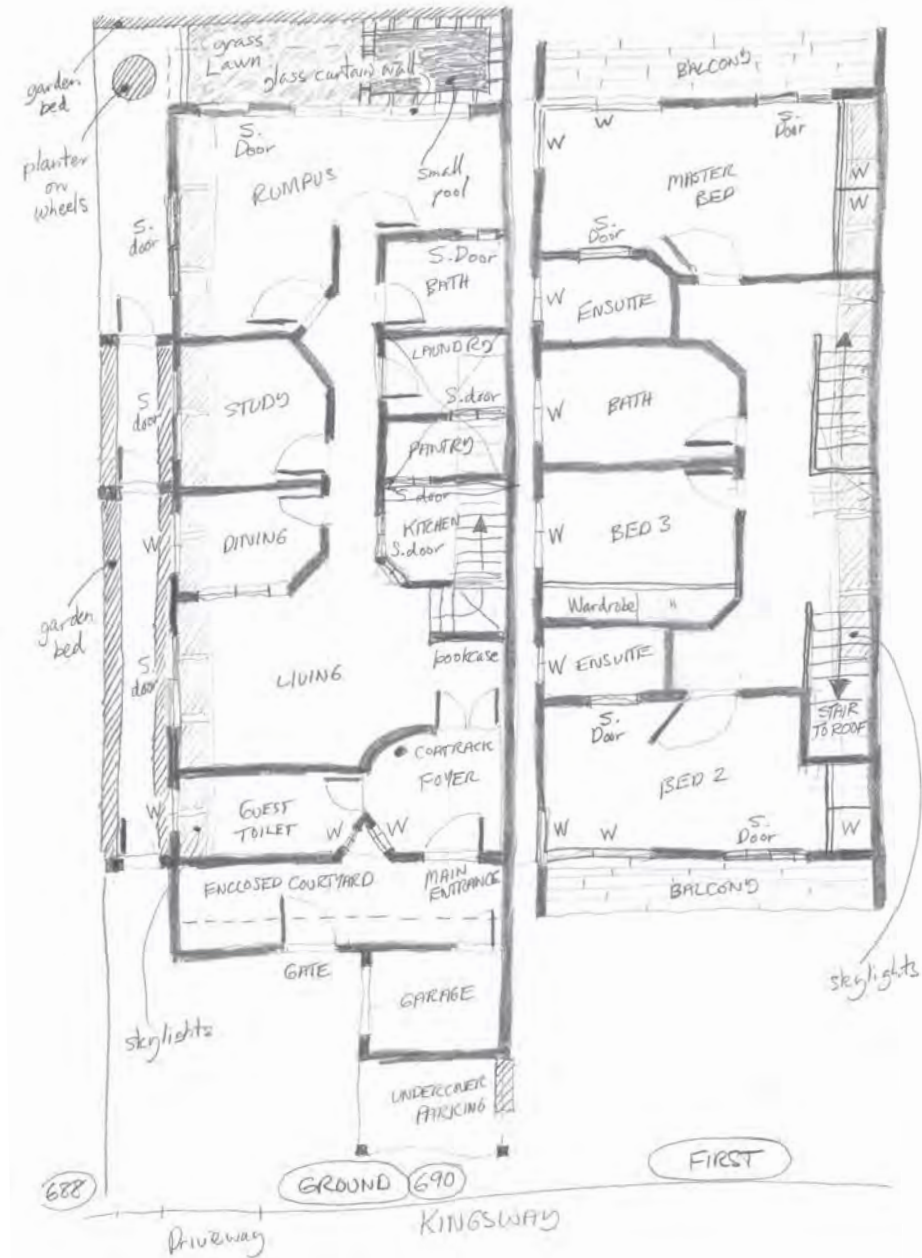


"Low cost" house renovation, Avd. América, Madrid Spain  
 Year: 2012  
 Architecture: QUADRATURA  
**Inspirations** — a sculptured form, from shelving appearing to be etched from the wall  
**Materials** — timber and uniform rendering of paint

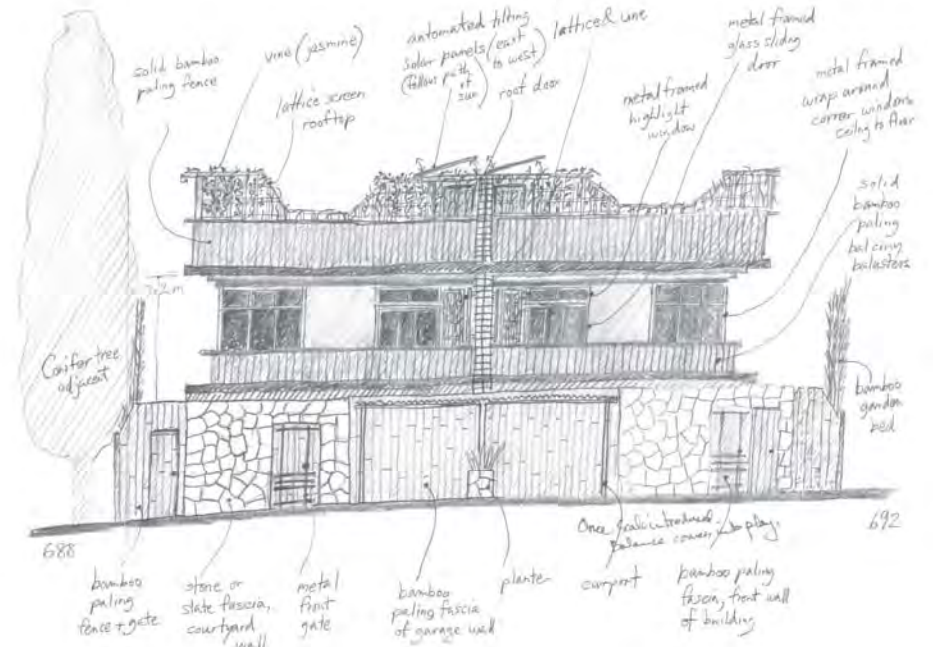




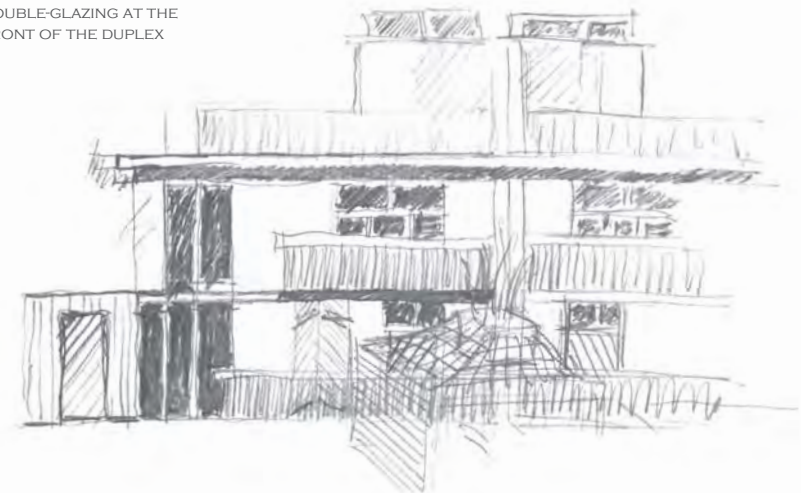
F.S.R = 0.45 : 1 / ZONE 4 RESIDENTIAL

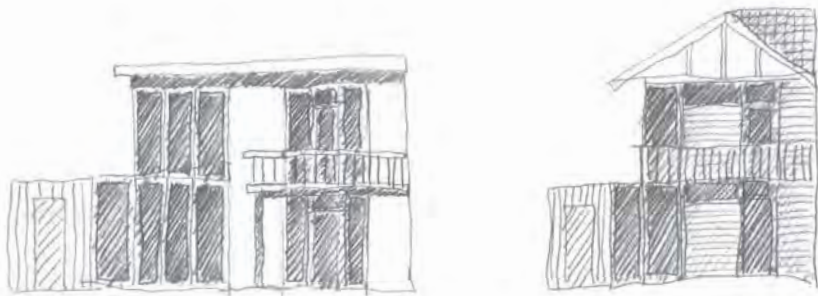


INITIAL CONCEPT

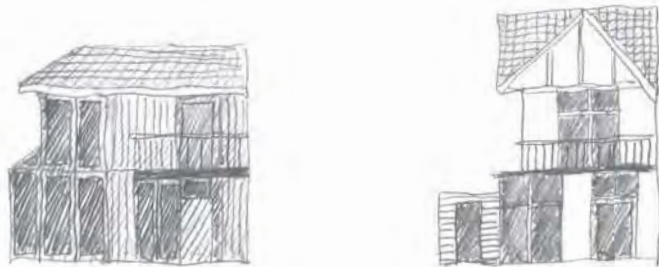


DEVELOPMENT TO REDUCE FORTIFICATIONS, USING DOUBLE-GLAZING AT THE FRONT OF THE DUPLEX

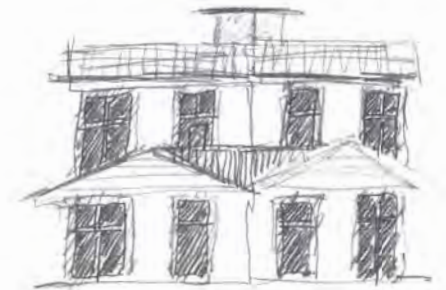




FAVOUR THIS SKILLION ROOF



DROPPING THE ROOF TOP GARDEN.  
MOVING AWAY FROM A FLAT ROOF.  
THINKING OF HIPS AND GABLES  
TO BE IN KEEPING WITH THE  
ADJACENT HOUSES.

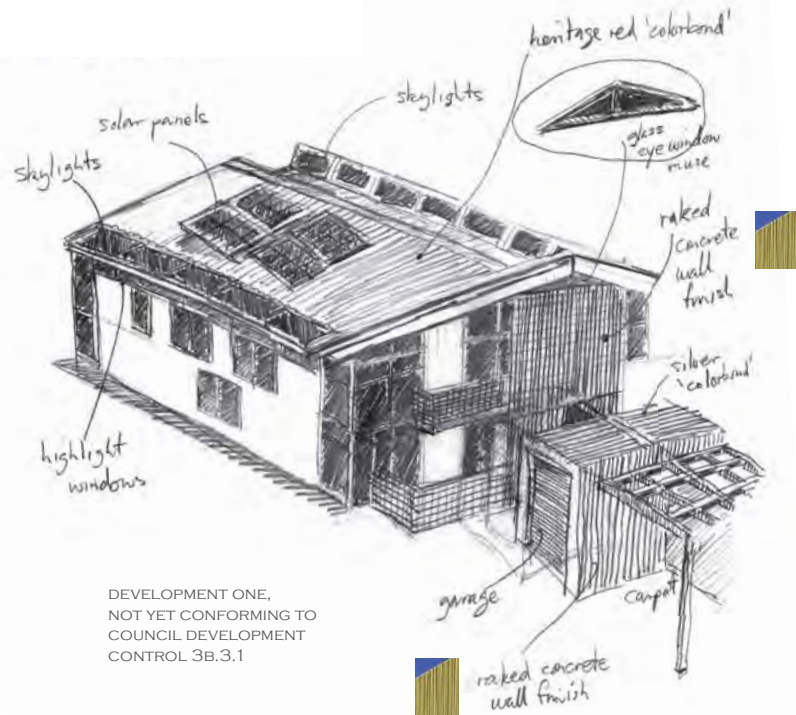


FAVOUR THIS GABLE ROOF.  
CENTRE HIGHLIGHT WINDOW  
AS MUSE.



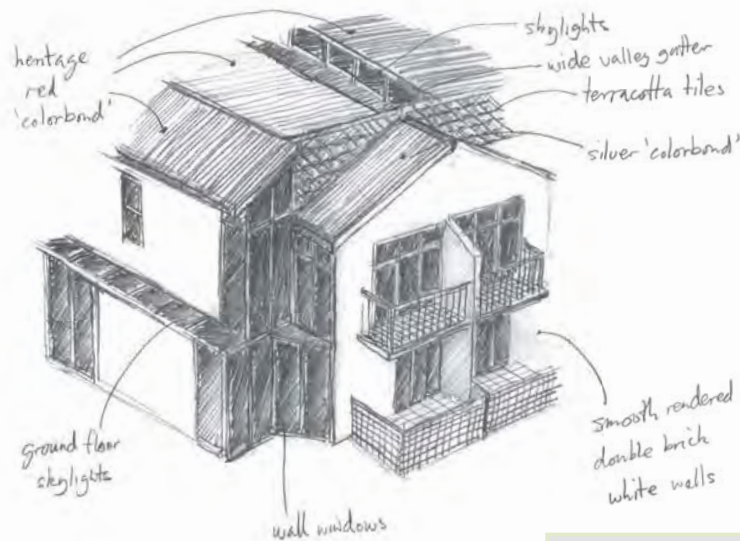
FAVOUR THIS HIP AND VALLEY ROOF



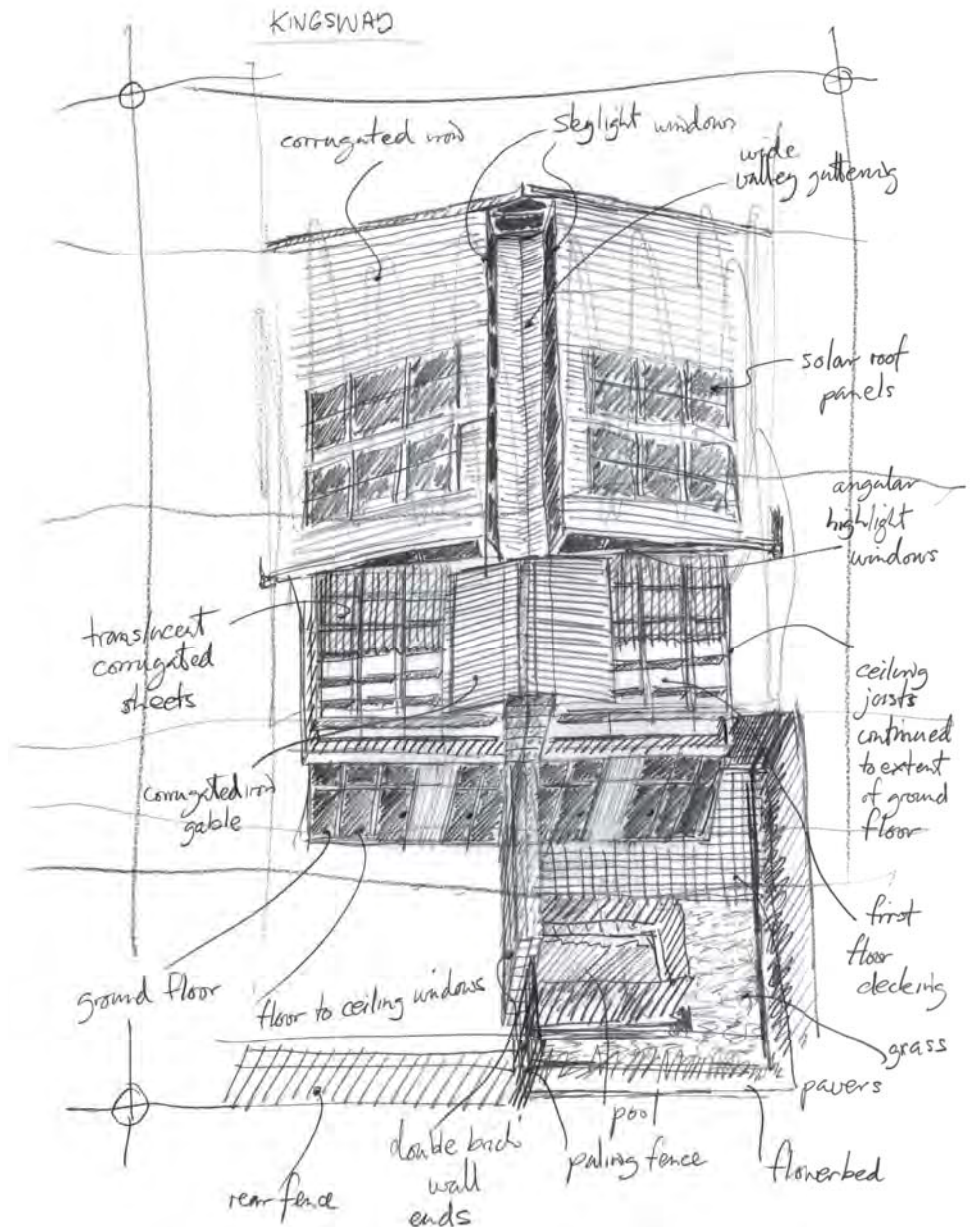


DEVELOPMENT ONE,  
NOT YET CONFORMING TO  
COUNCIL DEVELOPMENT CONTROL 3B.3.1

DEVELOPMENT TWO

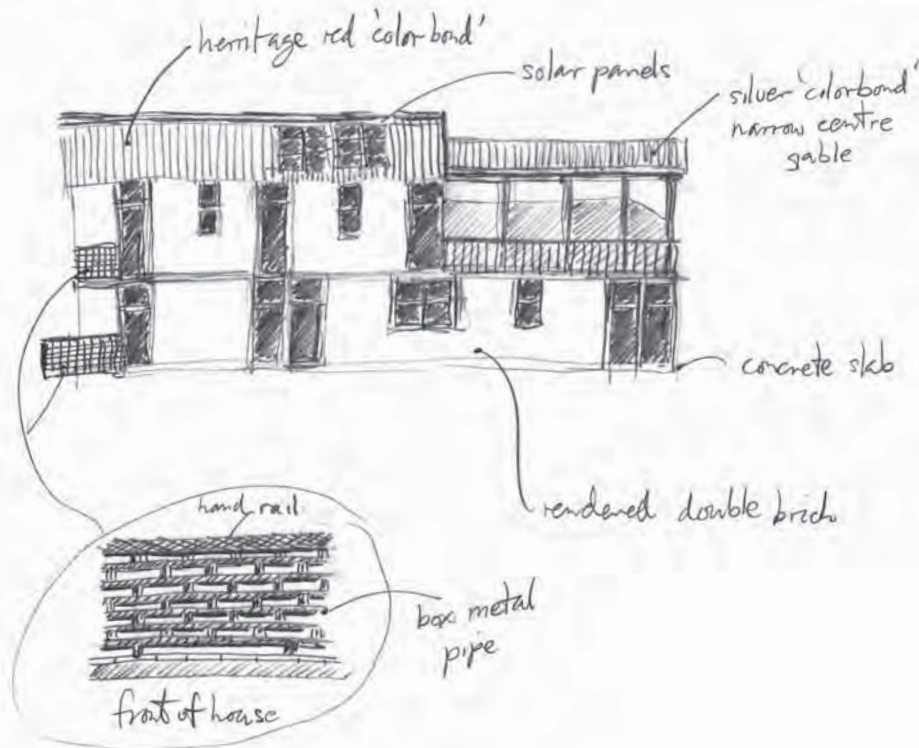


DEVELOPMENT ONE, ADHERENCE TO COUNCIL DEVELOPMENT CONTROL 3B.3.1



IDEAS, WEST ELEVATION, DEVELOPED PLAN

DEVELOPMENT ONE,  
WITHOUT EXTERIOR STUDY



FIRST FLOOR PATIO  
AND GROUND FLOOR  
GARDEN FRONT  
BALUSTRADES  
DESIGN.  
REFERENCE, SMH  
11/06/2012  
PHOTOGRAPH OF  
THE HYDE  
APARTMENT BLOCK,  
HYDE PARK SYDNEY.

RENDERED DOUBLE BRICK DUPLEX, CORRUGATED IRON GABLE ROOF.  
VENTILATION, COOPER LOUVRE HIGHLIGHT WINDOWS FOR ALL FLOOR TO CEILING WINDOWS.  
PHOTOVOLTAIC SOLAR ENERGY PANELS FOR ELECTRICITY AND HOT WATER PRODUCTION.

